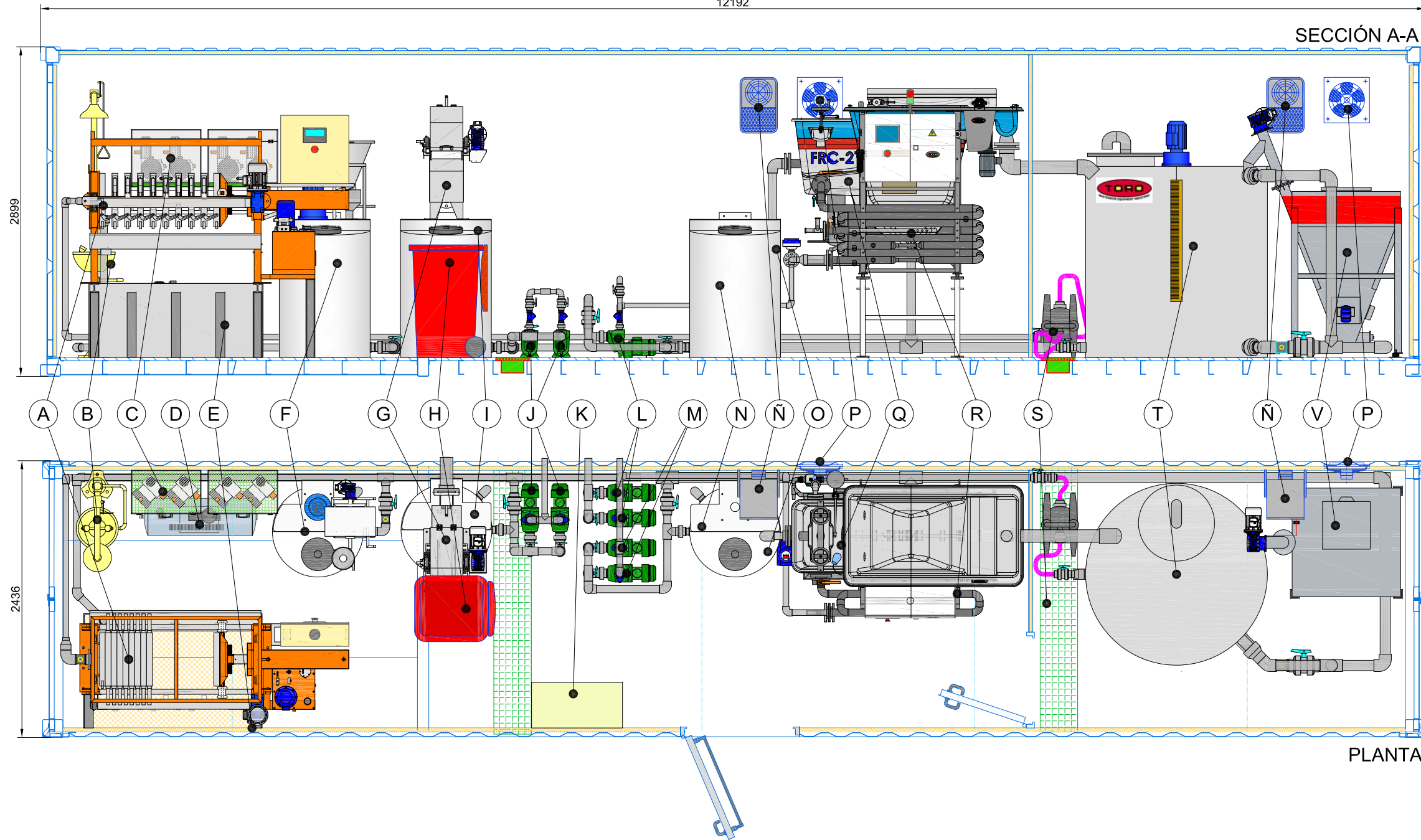


12192

SECCIÓN A-A



COMPONENTES / COMPONENTS		
MARCA/ MARK	DENOMINACION/DENOMINATION	Uds.QTY
A	FILTRO PRENSA / FILTER PRESS	1
B	DUCHA LAVA-OJOS / SHOWER EYEWASH	1
C	BOMBAS DOSIFICADORAS / DOSING PUMPS	4/6
D	COMPRESOR / COMPRESSOR	1
E	CONTENEDOR DE SOLIDOS / SOLID WASTE CONTAINER	1
F	PLANTA AUTOMATICA DE POLIELECTROLITO /AUTOMATIC PLANT POLYELECTROLYTE	2
G	TAMIZ ROTATIVO/ROTARY SREEN	1
H	CONTENEDOR DE SOLIDOS / SOLID WASTE CONTAINER	1
I	DEPOSITO BOMBEO A TAMIZ / PUMPING TANK TO SIEVE	
J	BOMBEO SALIDA TAMIZ / PUMPING OUT SREEN	1
K	CUADRO ELECTRICO / ELECTRICAL PANEL	1
L	BOMBEO A FLOTACION / IMPUT PUMP FLOAT	2
M	BOMBEO SALIDA FLOTADOR / PUMPING OUT FLOAT	2
N	DEPOSITO BOMBEO FRC / PUMPING TANK FLOAT	1
O	AEROTERMO / AIR HEAT	1
P	AEROTERMO / AIR HEAT	2
Q	CAUDALÍMETRO / FLOWMETER	1
R	FRC - 2 / DAF	1
S	FLOCULADOR / FLOCCULATOR	1
T	PLANTA AUTOMATICA DE POLIELECTROLITO /AUTOMATIC PLANT POLYELECTROLYTE	1
V	EXTRACTOR / AIR EXTRACTOR	1

PLANTA



TORO EQUIPMENT, S.L.
 Ctra Nacional VP-3302 Km11
 47329. Villavaquerin
 Valladolid (España)